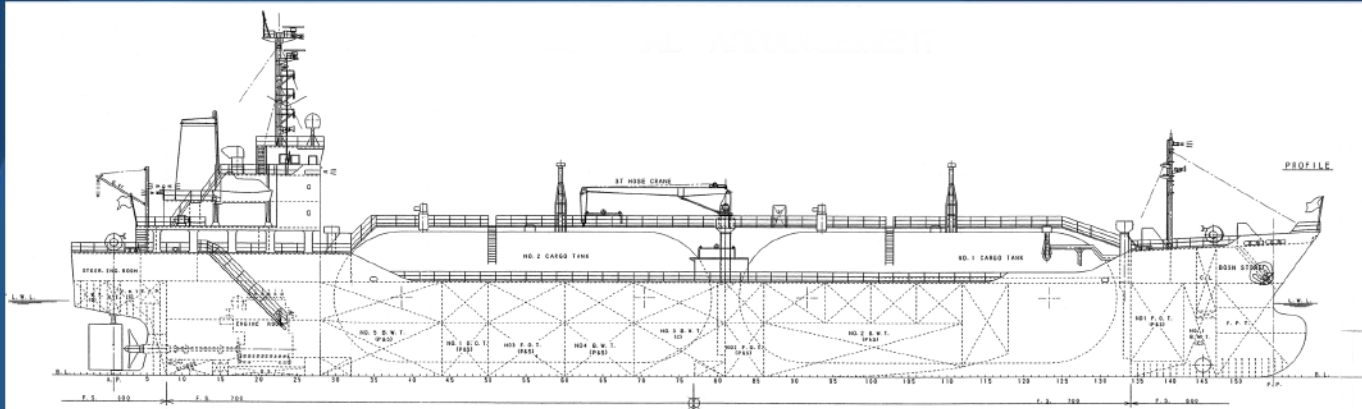




NAFTOMAR



GAZ CENTURY

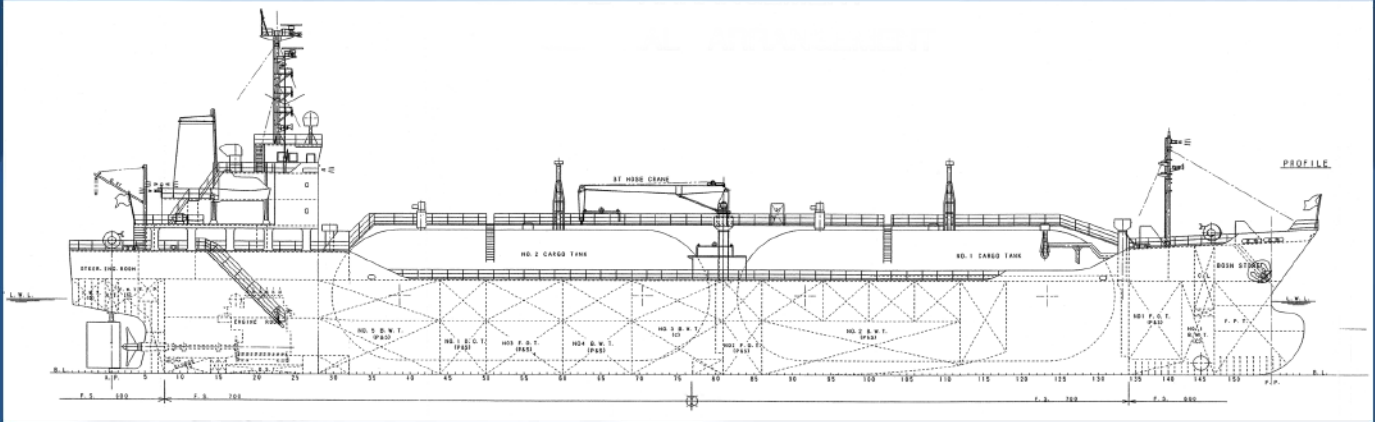
GENERAL CHARACTERISTICS

Owners:	GLOBALGAZ SHIPPING AND TRADING CO.S.A.
Built:	HIGAKI SHIPBUILDING CO.,LTD
Flag:	PANAMANIAN
Class:	Bureau Veritas
Call Sign:	H9NS
GRT/NRT	
International:	4.915/1.995
Suez:	5.733,38/4.971,75
Panama:	4.915/4.305
IMO:	YES
USCG:	YES
RINA:	N/A
MOT:	YES
LOA:	114,22 m
LBP:	106,00 m
Breadth Moulded:	18,00 m
Depth Moulded:	8,90 m
DWT, Summer:	5.700 mtns
Draft, Summer:	7,014 m
Draft, Propane:	6,41 m
Main Engine:	2-CYCLE DIESEL ENGINE KAWASAKI MAN B&W 6L35MC
Maximum Power:	3.900 kw/210 rpm
Fuel Grade:	ISO 8217 RMG 35
Consumption/day:	16,2 ton / day
Speed (Average):	14.5 knots
Auxiliaries:	4-CYCLE DIESEL ENGINE S165L - ST
Power:	397 KW x 1.200 min
Total Available:	794 KW
Grade/Consumption:	1.5 ton / day
Bunker Capacity:	IFO : 627,90 m ³ (100%) MDO : 109,62 m ³

Particulars herein believed to be correct but not guaranteed



NAFTOMAR



GAZ CENTURY

CARGO PLANT AND HANDLING EQUIPMENT

- MARVS: 1,77 mpa
Min. Temperature: 0°C
Max. Specific Gravity: 0,948
Max. Vacuum: 0 mpa
Cargo Pumps: Two TEIKOKU MACHINERY WORKS, LTD. Electric Motor Driven Deep Well Pump Vertical, Centrifugal, Multi-stage design 400 m³ / h x 110 m (S.G. 0.601)
Cargo Compressors: Two TANABE PNEUMATIC MACHINERY CO., LTD. Water -cooled one stage double acting oil less 460 cbm / h
Cargo Heater: 550 cbm / h from minus 42 deg. C to 0 deg. C with sea water of 800 cbm / h (seawater temperature + 18deg.C)
Booster Pumps: HAMWORTHY KSE SVANEHØJ INTERNATIONAL A/S Electric Motor Driven Horizontal centrifugal 300 m³ / h x 110 m (S.G. 0.601)
Deck Tanks: N/A
Inert Gas Plant: UNITOR GENERON HPMC - 6511, Discharging pressure : 8 ~ 10kg / cm², Dew point -50 °C
Cargo Vaporizer: N/A
Bow Thruster: Yes
Cargo Manifolds: Liquid connection 10 inches ANSI 300lb
Vapour connection 6 inches ANSI 300lb

INDICATIVE CAPACITIES OF CARGO TANKS

TANK No.	CBM 100% (m ³)	S.G. T°C	BUTANE	PROPANE	BUTADIENE	VCM
			0,605	0,5822	0,653	0,912
1	3.608,02		1.587,53	1.566,03	1.753,54	2.029,04
2	3.607,86		1.587,47	1.565,97	1.753,46	2.028,96
TOTAL	7.215,88		3.175 mtms	3.132 mtms	3.507 mtms	4.058 mtms